

LX-300

On-Demand Steam Boilers



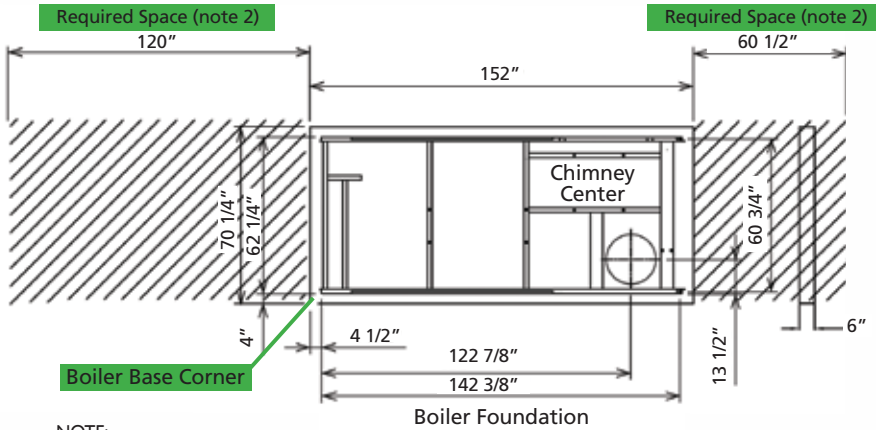
The New LX-300 Zero-Side-Clearance Steam Boiler Packs All the Horsepower You Need in 1/4 the Space (Model Shown: LX 300 SG)*

Small footprint design offers high-efficiency, **On-Demand Steam** Saving money, space, and start-up time

- ▶ Modular design allows flexibility to customize your steam plant to meet any demand and load profile optimized for superior energy management
- ▶ Zero-side-clearance design reduces boiler room size and cuts construction costs
- ▶ Achieves **87%** efficiency using Miura's built-in energy recovery & water treatment systems
- ▶ Steam production from **cold start in 5 minutes**
- ▶ Saves up to 20% on fuel costs & CO₂ emissions on average
- ▶ New design innovations optimize combustion for consistent low NOx emissions
- ▶ **Ultra Low NOx Model Now Available (9 ppm)**

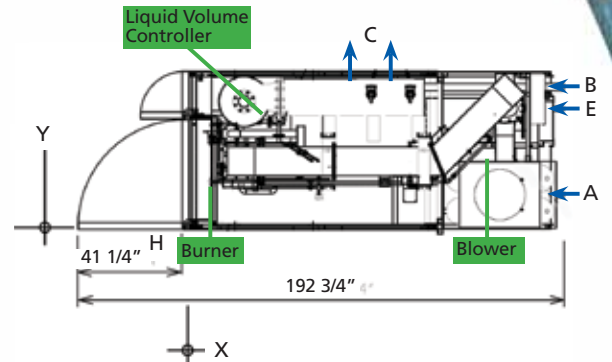
On-Demand Steam Solutions

LX-300 SPECIFICATIONS

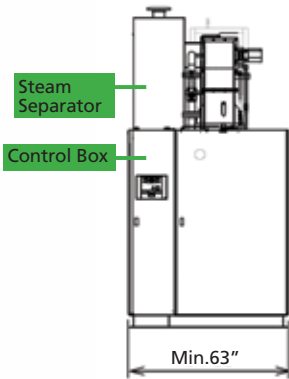


NOTE:
 1. Dimensions, specifications, and some piping are subject to change without notice.
 2. If the boilers are installed side-by-side, some space is required for replacing the pressure vessel and some parts.

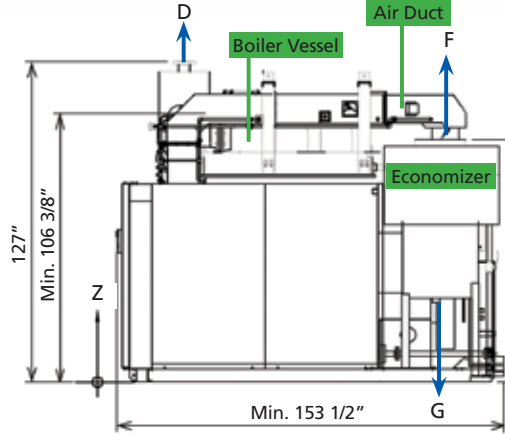
TOP VIEW



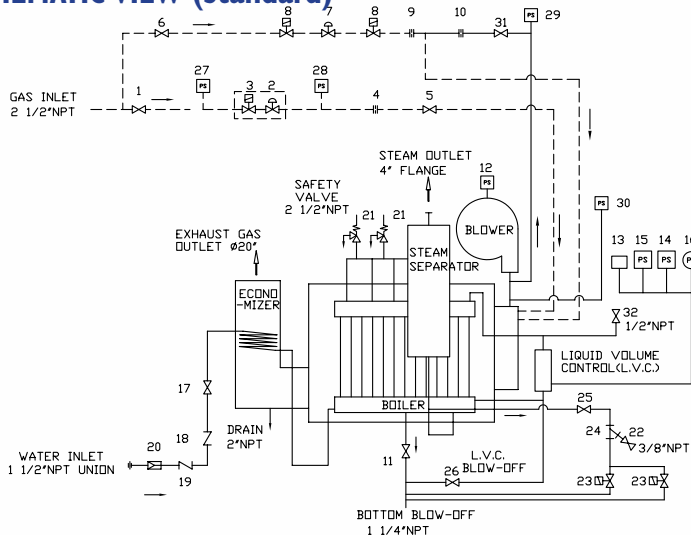
FRONT VIEW



SIDE VIEW



SCHEMATIC VIEW (Standard)



LEGEND	DIMENSION (INCHES)	DIMENSION (INCHES)			
		X	Y	Z	SIZE
A	Feedwater Inlet	148 5/8	13 3/16	8 1/2	1 1/2" NPT
B	Supply Gas Inlet	148 5/8	56 1/4	5 1/4	2 1/2" NPT
C	Safety Valve Outlet	72 5/8 87 13/16	55 5/8	114 15/16	2 x 2 1/2" NPT
D	Steam Outlet	21 13/16	50 5/8	127	4" 150# Flange
E	Button Blow-Off L. V. Control Blowdown Automatic Blowdown	148 5/8	47 5/8	3	1 1/4" NPT
F	Fuel Gas Outlet	123 3/8	13 3/16	95 15/16	20" I. D. Duct
G	Economizer Drain	123 3/8	13 3/16	31 7/16	2" NPT
H	Boiler Corner	0	0	0	—

NO.	NAME OF PART	NO.	NAME OF PART
1	MAIN GAS VALVE	17	WATER VALVE
2	MAIN GAS REGULATOR	18	CHECK VALVE
3	GAS CONTROL VALVE	19	CHECK VALVE
4	MAIN GAS ORIFICE	20	FLOW REGULATING VALVE
5	TEST FIRING VALVE	21	SAFETY VALVE
6	PILOT GAS VALVE	22	SAMPLE WATER VALVE
7	PILOT GAS REGULATOR	23	BLOWDOWN CONTROL VALVE
8	PILOT GAS CONTROL VALVE	24	BLOWDOWN STRAINER
9	PILOT GAS ORIFICE	25	BLOWDOWN VALVE
10	PILOT AIR ORIFICE	26	L.V.C. BLOW-OFF VALVE
11	BLOW-OFF VALVE	27	GAS PRESSURE SWITCH
12	PRESSURE SWITCH	28	GAS PRESSURE SWITCH
13	PRESSURE SENSOR	29	AIR PRESSURE SWITCH
14	STEAM PRESSURE SWITCH	30	AIR PRESSURE SWITCH
15	STEAM PRESSURE SWITCH	31	GAS PRESSURE SWITCH
16	STEAM PRESSURE SWITCH	32	AIR CONTROL VALVE

NOTE:
 1. Unless otherwise specified, all items are standard.
 2. This drawing is illustrated with an economizer.
 3. Flanges used are ANSI B16.5 class 150#.
 4. Safety valve size will change for boiler set below 150psig.
 5. Design, specifications and some pipings are subject to change without notice.

USA: 1-888-309-5574 • Canada: 1-800-666-2182 • www.miuraboiler.com
 Worldwide Headquarters • Japan: +81-89-979-7123 • www.miuraz.co.jp
 Facilities located in: USA • Canada • Japan • China • Korea • Taiwan



Miura

Miura Steam is Engineered for Greater Efficiency,
 Lower Costs, and Reduced Environmental Impact.