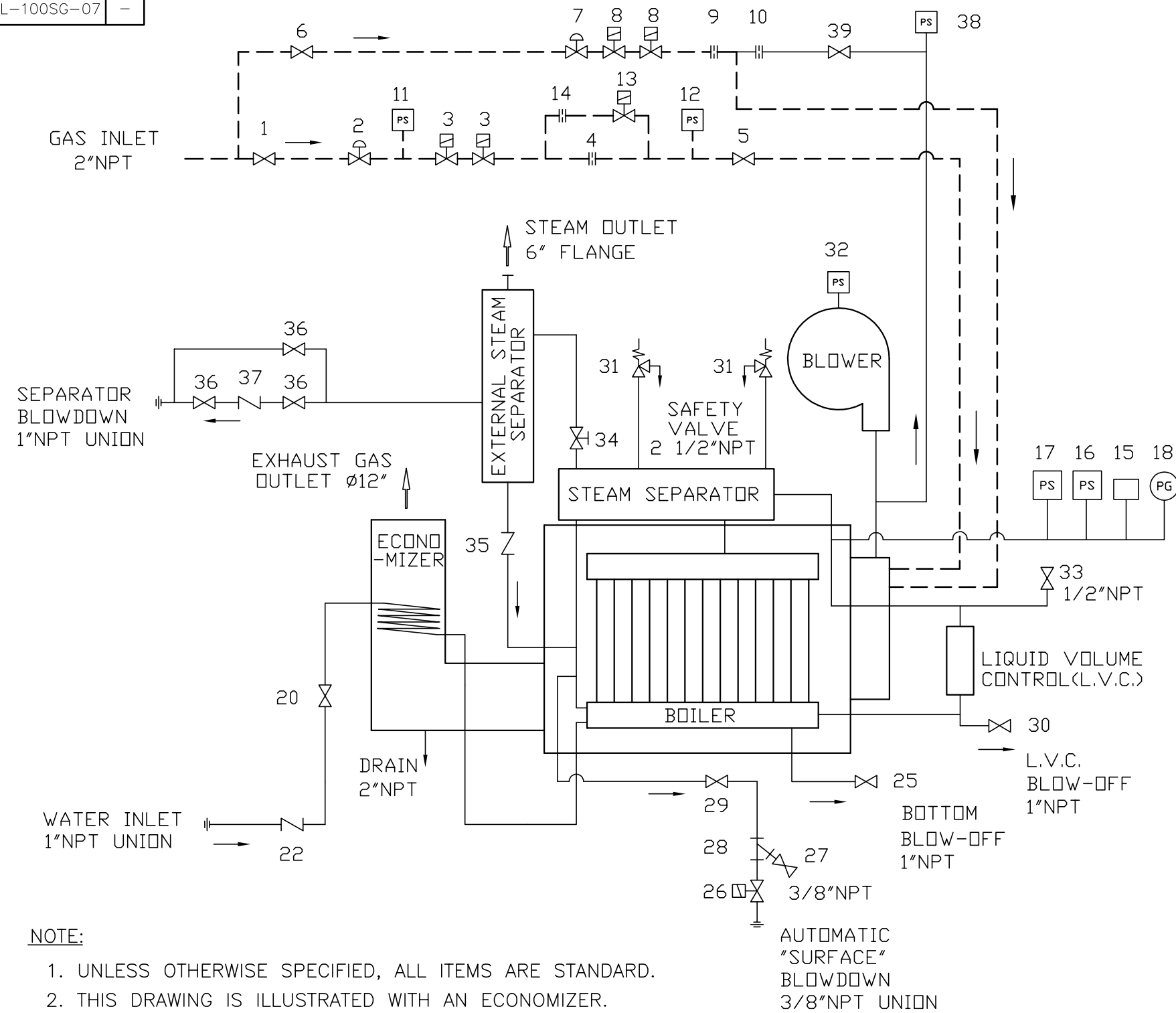


APP. TYPE	QTY
LXL-100SG-07	-



39	AIR CONTROL VALVE			1/2" #3380 NEO
38	AIR PRESSURE SWITCH			RLGP-G 5-30" ANTUNES
37	BLOWDOWN PROCESS TRAP			1" SER.152 YARWAY
36	SEP. BLOWDOWN VALVE			1" FIG.13 NEWMAN
35	CHECK VALVE			2 1/2" FIG.651 NEWMAN
34	STEAM CONTROL VALVE			6" FIG.K150SCO KITZ
33	AIR VENT VALVE			1/2" #3380 NEO
32	PRESSURE SWITCH			#8024204025 (AIR FILTER)
31	SAFETY VALVE			2"xJx2 1/2" #6021JH KUNKLE
30	L.V.C. BLOW-OFF VALVE			1" #2500 NEO
29	BLOWDOWN VALVE			1/2" #2500 NEO
28	BLOWDOWN STRAINER			3/4" 20MESH
27	SAMPLE WATER VALVE			3/8" #18(AK300D) KITZ
26	BLOWDOWN CONTROL VALVE			255A-1/4-E-BR-3/8 BURKERT
25	BOILER BLOW-OFF VALVE			1" #2500 NEO
22	CHECK VALVE			1" DDCV2 MIURA (WITH ECO.)
21				
20	VALVE			1" #3380 NEO (WITH ECO.)
18	PRESSURE GAUGE			ø3 1/2" 0-30PSIG WINTER'S
17	STEAM PRESSURE SWITCH			L4079B (BACK-UP CONTROL)
16	STEAM PRESSURE SWITCH			L404F (HIGH LIMITED)
15	PRESSURE SENSOR			YSK-AC03M-311
14	MAIN GAS ORIFICE (HIGH)			ø7/8"(NATURAL)/ø3/4"(PROPANE)
13	HIGH-LOW CONTROL VALVE			1 1/2" 8215B70 ASCO
12	GAS PRESSURE SWITCH			RLGP-G 5-30" ANTUNES (HIGH)
11	GAS PRESSURE SWITCH			RLGP-G 5-30" ANTUNES (LOW)
10	PILOT AIR ORIFICE			ø5/32"
9	PILOT GAS ORIFICE			ø1/16"
8	PILOT GAS CONTROL VALVE			1/2" 8215G20 ASCO
7	PILOT GAS REGULATOR			1/2" #325-3 MAXITROL
6	PILOT GAS VALVE			1/2" #3380 NEO
5	TEST FIRING VALVE			1 1/2" #3380 NEO
4	MAIN GAS ORIFICE (LOW)			ø7/16"(NATURAL)/ø7/16"(PROPANE)
3	GAS CONTROL VALVE			2" V5055+V4055 HONEYWELL
2	MAIN GAS REGULATOR			2" 133L FISHER
1	MAIN GAS VALVE			2" #3380 NEO
NO	NAME OF PART	MATERIAL	QTY	REMARKS / DRAWING #

- NOTE:**
- UNLESS OTHERWISE SPECIFIED, ALL ITEMS ARE STANDARD.
  - THIS DRAWING IS ILLUSTRATED WITH AN ECONOMIZER.
  - FLANGES USED ARE ANSI B16.5 CLASS 150#.
  - DESIGN, SPECIFICATIONS AND SOME PIPINGS ARE SUBJECT TO CHANGE WITHOUT NOTICE.
  - SAFETY VALVE SIZE WILL CHANGE FOR BOILER SET BELOW 15PSIG.
  - ITEMS 19, 23 AND 24 ARE APPLIED FOR ECONOMIZER SECTION VIII ONLY.

DWN.: ALAN	CK'D.:	SCALE: -	DO NOT SCALE
------------	--------	----------	--------------

<p style="text-align: center;">" CONFIDENTIAL "</p> <p style="font-size: small;">THIS MATERIAL IS THE PROPERTY OF MIURA BOILER CO., LTD., AND MUST NOT BE REPRODUCED, PUBLISHED OR DISCLOSED TO OTHERS WITHOUT AUTHORIZATION.</p>	SYM	REVISION	DATE	BY	DATE: MAY 22,07	APPROVED:	THIRD ANGLE SYSTEM	DIM'N SHOWN ARE INCH
	CAD DWG - NO MANUAL CHANGES PERMITTED					<b>MIURA BOILER CO., LTD.</b> <small>BRANTFORD, ONTARIO, CANADA</small>		DESCRIPTION: <b>BOILER SYSTEM DIAGRAM</b>
								DRAWING NUMBER <b>A000-XL10-0S51</b>