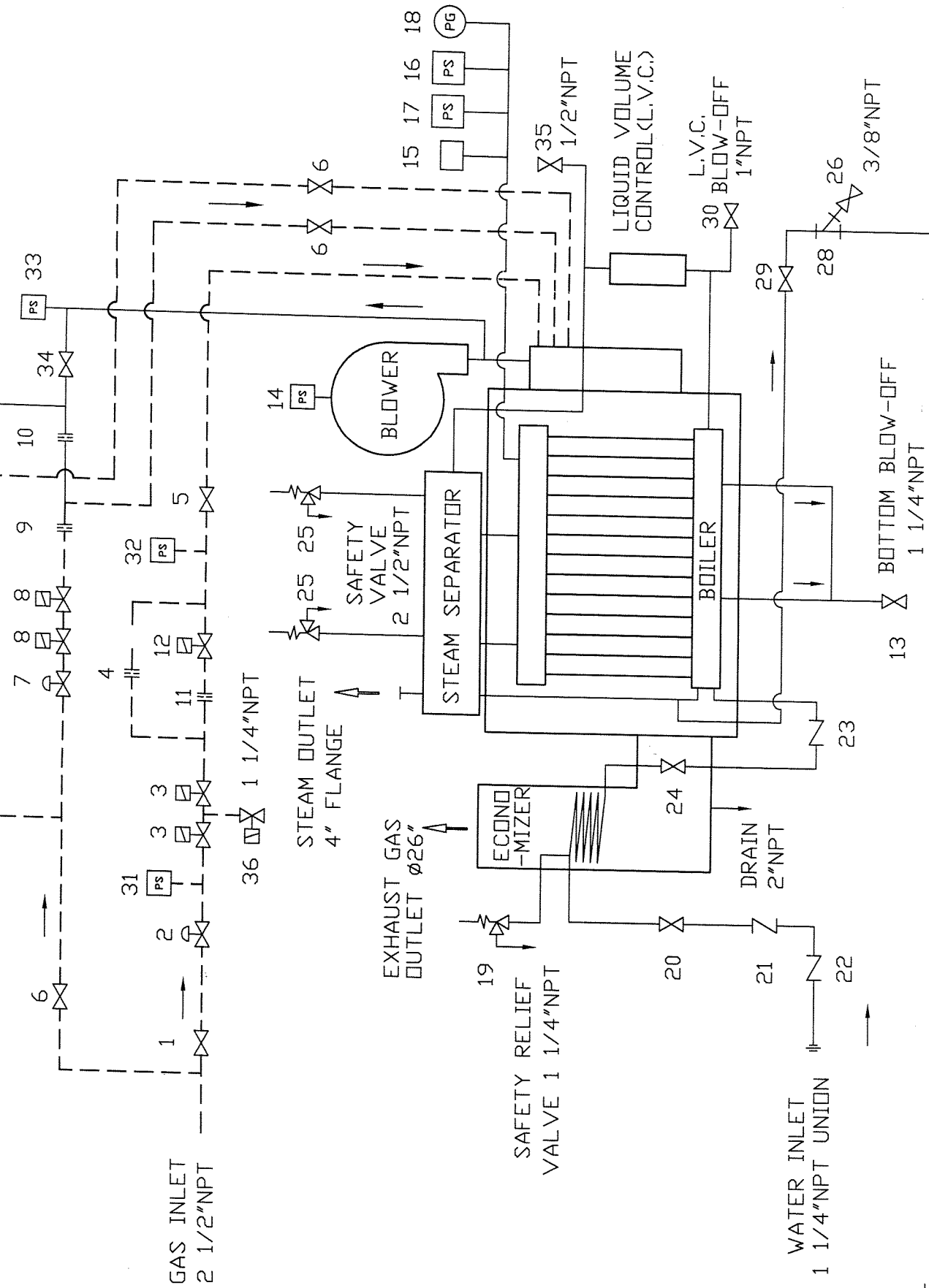


APP. TYPE	QTY
LX-300	-



**NOTE:**

1. UNLESS OTHERWISE SPECIFIED, ALL ITEMS ARE STANDARD.
2. THIS DRAWING IS ILLUSTRATED WITH AN ECONOMIZER.
3. ITEMS 19, 23 AND 24 ARE APPLIED FOR ECONOMIZER SECTION VIII ONLY.
4. FLANGES USED ARE ANSI B16.5 CLASS 150#.
5. SAFETY VALVE SIZE WILL CHANGE FOR BOILER SET BELOW 150PSIG.
6. DESIGN, SPECIFICATIONS AND SOME PIPINGS ARE SUBJECT TO CHANGE WITHOUT NOTICE.

AUTOMATIC "SURFACE" BLOWDOWN 3/8" NPT UNION

NO	NAME OF PART	MATERIAL	QTY	REMARKS / DRAWING #
36	GAS VENT VALVE			1 1/4" S262SA02N3GJ7 ITT
35	AIR VENT VALVE			1/2" #3380 NEO
34	AIR CONTROL VALVE			1/2" #3380 NEO
33	AIR PRESSURE SWITCH			RLGP-G 5-30" ANTUNES
32	GAS PRESSURE SWITCH			RHGP-A 10-50" CHICAGO (HIGH)
31	GAS PRESSURE SWITCH			RLGP-G 10-50" ANTUNES (LOW)
30	L.V.C. BLOW-OFF VALVE			1" #2500 NEO
29	BLOWDOWN VALVE			3/4" #2500 NEO
28	BLOWDOWN STRAINER			3/4" 20MESH
27	BLOWDOWN CONTROL VALVE			255A-5/32-E-BR-3/8 BURKERT
26	SAMPLE WATER VALVE			3/8" #18(AK300D) KITZ
25	SAFETY VALVE			2" x 2 1/2" #6021JH KUNKLE
24	WATER VALVE			1 1/4" #3380 NEO
23	CHECK VALVE			1 1/4" FIG.48 NH
22	CHECK VALVE			1 1/4" SCV316 DURABLA(WITH ECO.)
21	CHECK VALVE			1 1/4" FIG.48 NH (WITH ECO.)
20	VALVE			1 1/4" #3380 NEO (WITH ECO.)
19	SAFETY RELIEF VALVE			3/4" x Ex1 1/4" #918BED (WITH ECO.)
18	PRESSURE GAUGE			Ø4" 0-300PSIG WINTER'S
17	STEAM PRESSURE SWITCH			L404C (HIGH LIMITED)
16	STEAM PRESSURE SWITCH			L404A (BACK-UP CONTROL)
15	PRESSURE SENSOR			YSK-AC20M-334
14	PRESSURE SWITCH			#8024204025 (AIR FILTER)
13	BLOW-OFF VALVE			1 1/4" #2500 NEO
12	HIGH-LOW CONTROL VALVE			2" 8215B80 ASCO
11	MAIN GAS ORIFICE (HIGH)			Ø2 1/16"(NATURAL)/Ø1"(PROPANE)
10	PILOT AIR ORIFICE			Ø5/32"
9	PILOT GAS ORIFICE			Ø1/16"
8	PILOT GAS CONTROL VALVE			1/2" 8215G20 ASCO
7	PILOT GAS REGULATOR			1/2" #325-3 MAXITROL
6	PILOT GAS VALVE			1/2" #3380 NEO
5	TEST FIRING VALVE			2" #3380 NEO
4	MAIN GAS ORIFICE (LOW)			Ø3/4"(NATURAL)/Ø3/4"(PROPANE)
3	GAS CONTROL VALVE			2 1/2" V5055+V4055 HONEYWELL
2	MAIN GAS REGULATOR			2" 133L FISHER
1	MAIN GAS VALVE			2 1/2" #3380 NEO

DWN: TRAM CK'D: *Raghu* SCALE: -- DO NOT SCALE

APPROVED: *Raghu* DATE: NOV.29,2004

THIRD ANGLE SYSTEM

DESCRIPTION: **BOILER SYSTEM DIAGRAM**

DRAWING NUMBER: **A000-LX30-0S10**

MIJURA BOILER CO., LTD. BRANTFORD, ONTARIO, CANADA

CAD DWG - NO MANUAL CHANGES PERMITTED

REVISION

DATE

BY

CONFIDENTIAL

THIS MATERIAL IS THE PROPERTY OF MIJURA BOILER CO., LTD., AND MUST NOT BE REPRODUCED, PUBLISHED OR DISCLOSED TO OTHERS WITHOUT AUTHORIZATION.