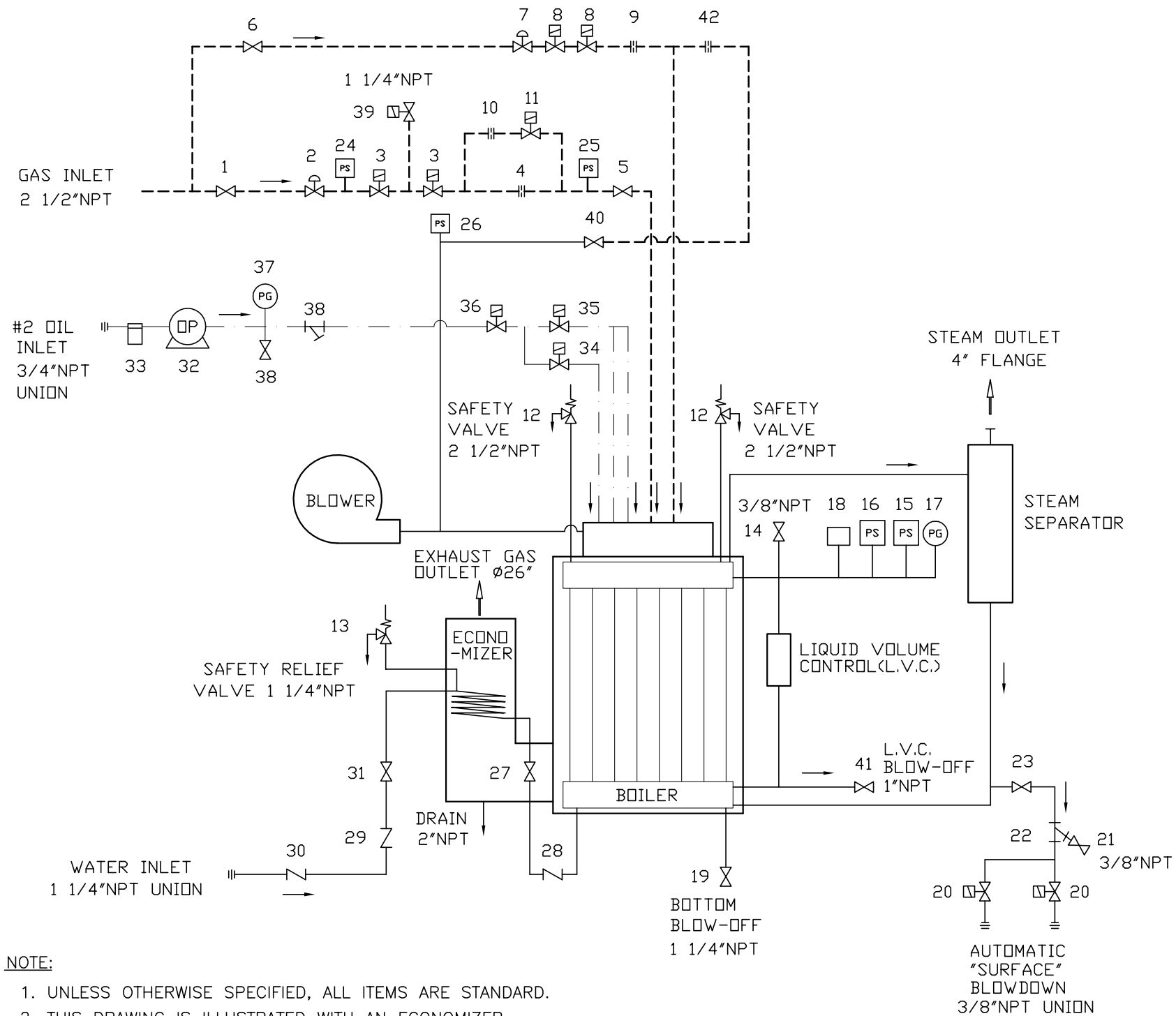


APP. TYPE	QTY
EX-300SGO-07	-



42	PILOT AIR ORIFICE			ø1/32" TO ø1/2"
41	L.V.C. BLOW-OFF VALVE			1" #2500 NEO
40	AIR CONTROL VALVE			1/2" #3380 NEO
39	GAS VENT VALVE			1 1/4" S262SA02N3GJ7 ITT
38	OIL VENT VALVE			1/4" #8523 FAIRVIEW
37	OIL PRESSURE GAUGE			ø2 1/2" 0-400PSIG WKA
36	OIL CONTROL VALVE			3/8" JFK8266D1V ASCO (SHUT OFF)
35	OIL CONTROL VALVE			3/8" JFK8266D1V ASCO (HIGH FIRE)
34	OIL CONTROL VALVE			3/8" JFK8266D1V ASCO (LOW FIRE)
33	OIL FILTER			3/4" 2A17A C.G.F.
32	OIL PUMP			2V026C-5D020 WEBSTER
31	VALVE			1 1/4" #3380 NEO (WITH ECO.)
30	CHECK VALVE			1 1/4" SCV316 DURABLA(WITH ECO.)
29	CHECK VALVE			1 1/4" FIG.48 NH (WITH ECO.)
28	CHECK VALVE			1 1/4" FIG.48 NH
27	WATER VALVE			1 1/4" #3380 NEO
26	AIR PRESSURE SWITCH			RLGP-G 5-30" ANTUNES
25	GAS PRESSURE SWITCH			RLGP-G 5-30" CHICAGO (HIGH)
24	GAS PRESSURE SWITCH			RLGP-G 5-30" CHICAGO (LOW)
23	BLOWDOWN VALVE			3/4" #2500 NEO
22	BLOWDOWN STRAINER			3/4" 20MESH
21	SAMPLE WATER VALVE			3/8" #18(AK300D) KITZ
20	BLOWDOWN CONTROL VALVE			255A-5/32-E-BR-3/8 BURKERT
19	BLOW-OFF VALVE			1 1/4" #2500 NEO
18	PRESSURE SENSOR			YSK-AC20M-334
17	PRESSURE GAUGE			ø4" 0-300PSIG WINTER'S
16	STEAM PRESSURE SWITCH			L404C (HIGH LIMITED)
15	STEAM PRESSURE SWITCH			L404A (BACK-UP CONTROL)
14	AIR VENT VALVE			3/8" #18(AK300D) KITZ
13	SAFETY RELIEF VALVE			3/4"xEx1 1/4" #918BED (WITH ECO.)
12	SAFETY VALVE			2"xJx2 1/2" #6021JH KUNKLE
11	HIGH-LOW CONTROL VALVE			2" 8215B80 ASCO
10	MAIN GAS ORIFICE (HIGH)			ø1 3/4" to ø2 1/2"(NATURAL)
9	PILOT GAS ORIFICE			ø1/16" to ø5/8"
8	PILOT GAS CONTROL VALVE			1/2" 8215G20 ASCO
7	PILOT GAS REGULATOR			1/2" #325-3 MAXITROL
6	PILOT GAS VALVE			1/2" #3380 NEO
5	TEST FIRING VALVE			2" #3380 NEO
4	MAIN GAS ORIFICE (LOW)			ø3/8" to ø1 1/4"(NATURAL)
3	GAS CONTROL VALVE			2 1/2" V5055+V4055 HONEYWELL
2	MAIN GAS REGULATOR			2" 133 FISHER
1	MAIN GAS VALVE			2 1/2" #3380 NEO

NO	NAME OF PART	MATERIAL	QTY	REMARKS / DRAWING #
DWN.:	ALAN	CK'D.:		SCALE: - DO NOT SCALE

- NOTE:
- UNLESS OTHERWISE SPECIFIED, ALL ITEMS ARE STANDARD.
 - THIS DRAWING IS ILLUSTRATED WITH AN ECONOMIZER.
 - DESIGN, SPECIFICATIONS AND SOME PIPINGS ARE SUBJECT TO CHANGE WITHOUT NOTICE.
 - FLANGES USED ARE ANSI B16.5 CLASS 150#.
 - SAFETY VALVE SIZE WILL CHANGE FOR BOILER SET BELOW 150PSIG.
 - ITEMS 13, 27 AND 28 ARE APPLIED FOR ECONOMIZER SECTION VIII ONLY.

<p style="text-align: center;">" CONFIDENTIAL "</p> <p>THIS MATERIAL IS THE PROPERTY OF MIURA BOILER CO., LTD., AND MUST NOT BE REPRODUCED, PUBLISHED OR DISCLOSED TO OTHERS WITHOUT AUTHORIZATION.</p>	SYM	REVISION	DATE	BY	DATE: MAY.22,07	APPROVED:	THIRD ANGLE SYSTEM	DIM'N SHOWN ARE INCH
	CAD DWG - NO MANUAL CHANGES PERMITTED					MIURA BOILER CO., LTD. BRANTFORD, ONTARIO, CANADA		DESCRIPTION: BOILER SYSTEM DIAGRAM
								DRAWING NUMBER A000-EX30-0S03