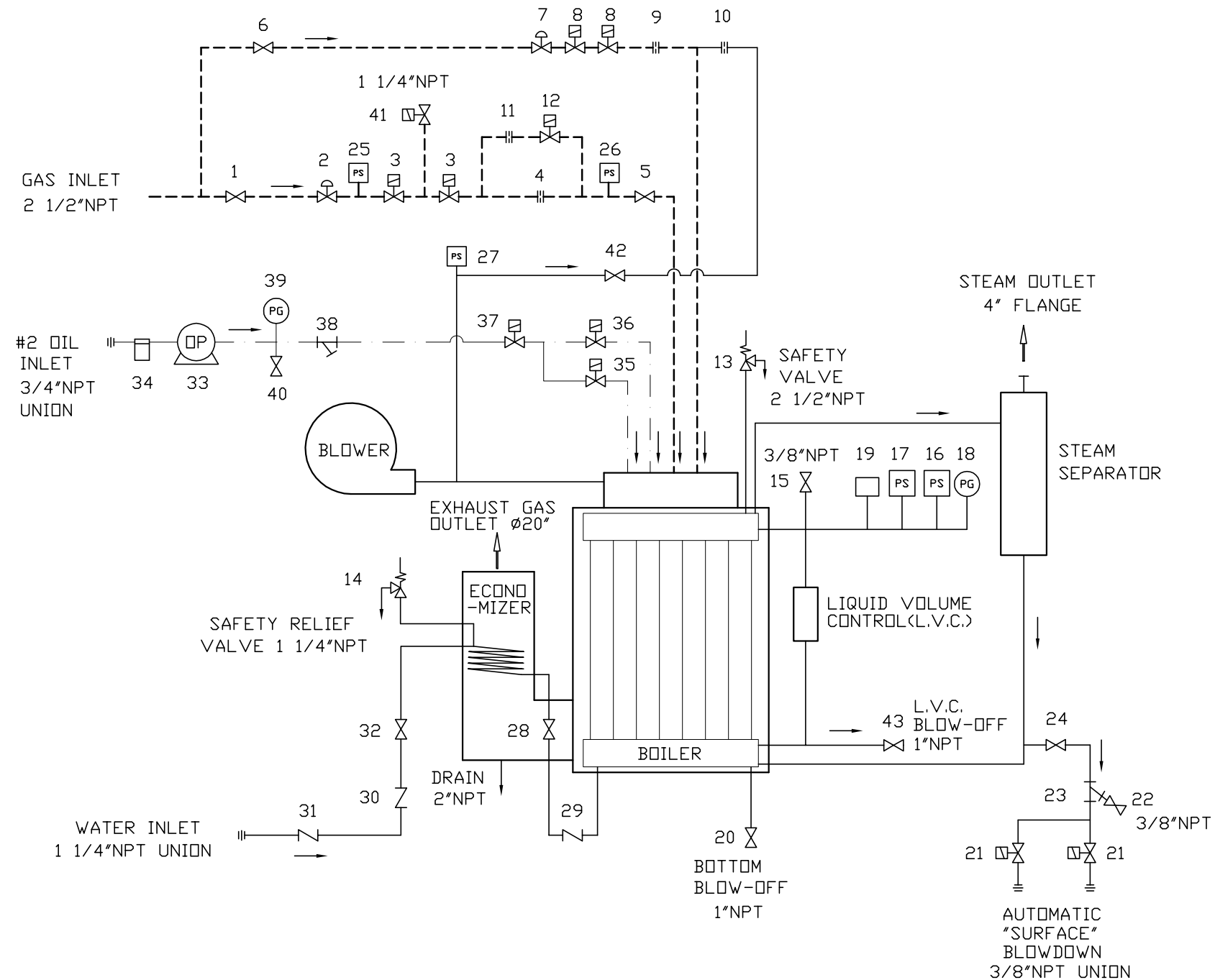


APP. TYPE	QTY
EX-250SGO-07	-



43	L.V.C. BLOW-OFF VALVE			1" #2500 NEO
42	AIR CONTROL VALVE			1/2" #3380 NEO
41	GAS VENT VALVE			1 1/4" S262SA02N3GJ7 ITT
40	OIL VENT VALVE			1/4" #8523 FAIRVIEW
39	OIL PRESSURE GAUGE			ø2 1/2" 0-400PSIG WIKA
38	OIL STRAINER			3/8" 100MESH
37	OIL CONTROL VALVE			3/8" 8210C6 ASCO (SHUT OFF)
36	OIL CONTROL VALVE			3/8" 8210C6 ASCO (HIGH FIRE)
35	OIL CONTROL VALVE			3/8" 8210C6 ASCO (LOW FIRE)
34	OIL FILTER			3/4" 2A17A C.G.F.
33	OIL PUMP			2R628 WEBSTER
32	VALVE			1 1/4" #3380 NEO (WITH ECO.)
31	CHECK VALVE			1 1/4" SCV316 DURABLA(WITH ECO.)
30	CHECK VALVE			1 1/4" FIG.48 NH (WITH ECO.)
29	CHECK VALVE			1 1/4" FIG.48 NH
28	WATER VALVE			1 1/4" #3380 NEO
27	AIR PRESSURE SWITCH			RLGP-G 5-30" ANTUNES
26	GAS PRESSURE SWITCH			RLGP-G 5-30" ANTUNES (HIGH)
25	GAS PRESSURE SWITCH			RLGP-G 5-30" ANTUNES (LOW)
24	BLOWDOWN VALVE			3/4" #2500 NEO
23	BLOWDOWN STRAINER			3/4" 20MESH
22	SAMPLE WATER VALVE			3/8" #18(AK300D) KITZ
21	BLOWDOWN CONTROL VALVE			255A-5/32-E-BR-3/8 BURKERT
20	BLOW-OFF VALVE			1" #2500 NEO
19	PRESSURE SENSOR			YSK-AC20M-334
18	PRESSURE GAUGE			ø4" 0-300PSIG WINTER'S
17	STEAM PRESSURE SWITCH			L404C (HIGH LIMITED)
16	STEAM PRESSURE SWITCH			L404A (BACK-UP CONTROL)
15	AIR VENT VALVE			3/8" #18(AK300D) KITZ
14	SAFETY RELIEF VALVE			3/4"xEx1 1/4" #918BED (WITH ECO.)
13	SAFETY VALVE			2"xJx2 1/2" #6021JH KUNKLE
12	HIGH-LOW CONTROL VALVE			2" 8215B80 ASCO
11	MAIN GAS ORIFICE (HIGH)			ø2 1/16"(NATURAL)/ø1"(PROPANE)
10	PILOT AIR ORIFICE			ø5/32"
9	PILOT GAS ORIFICE			ø1/16"
8	PILOT GAS CONTROL VALVE			1/2" 8215G20 ASCO
7	PILOT GAS REGULATOR			1/2" #325-3 MAXITROL
6	PILOT GAS VALVE			1/2" #3380 NEO
5	TEST FIRING VALVE			2" #3380 NEO
4	MAIN GAS ORIFICE (LOW)			ø3/4"(NATURAL)/ø3/4"(PROPANE)
3	GAS CONTROL VALVE			2 1/2" V5055+V4055 HONEYWELL
2	MAIN GAS REGULATOR			2" 133L FISHER
1	MAIN GAS VALVE			2 1/2" #3380 NEO

NO	NAME OF PART	MATERIAL	QTY	REMARKS / DRAWING #
DWN.:	TRAM	CK'D.:	SCALE: -	DO NOT SCALE

NOTE:

- UNLESS OTHERWISE SPECIFIED, ALL ITEMS ARE STANDARD.
- THIS DRAWING IS ILLUSTRATED WITH AN ECONOMIZER.
- DESIGN, SPECIFICATIONS AND SOME PIPINGS ARE SUBJECT TO CHANGE WITHOUT NOTICE.
- FLANGES USED ARE ANSI B16.5 CLASS 150#.
- SAFETY VALVE SIZE WILL CHANGE FOR BOILER SET BELOW 150PSIG.
- ITEMS 14, 28 AND 29 ARE APPLIED FOR ECONOMIZER SECTION VIII ONLY.

<p style="text-align: center;">" CONFIDENTIAL "</p> <p>THIS MATERIAL IS THE PROPERTY OF MIURA BOILER CO., LTD., AND MUST NOT BE REPRODUCED, PUBLISHED OR DISCLOSED TO OTHERS WITHOUT AUTHORIZATION.</p>	SYM	REVISION	DATE	BY	DATE: NOV.29,2004	APPROVED:	THIRD ANGLE SYSTEM	DIM'N SHOWN ARE INCH
	CAD DWG - NO MANUAL CHANGES PERMITTED					MIURA BOILER CO., LTD. BRANTFORD, ONTARIO, CANADA		DESCRIPTION: BOILER SYSTEM DIAGRAM
								DRAWING NUMBER A000-EX25-0S07