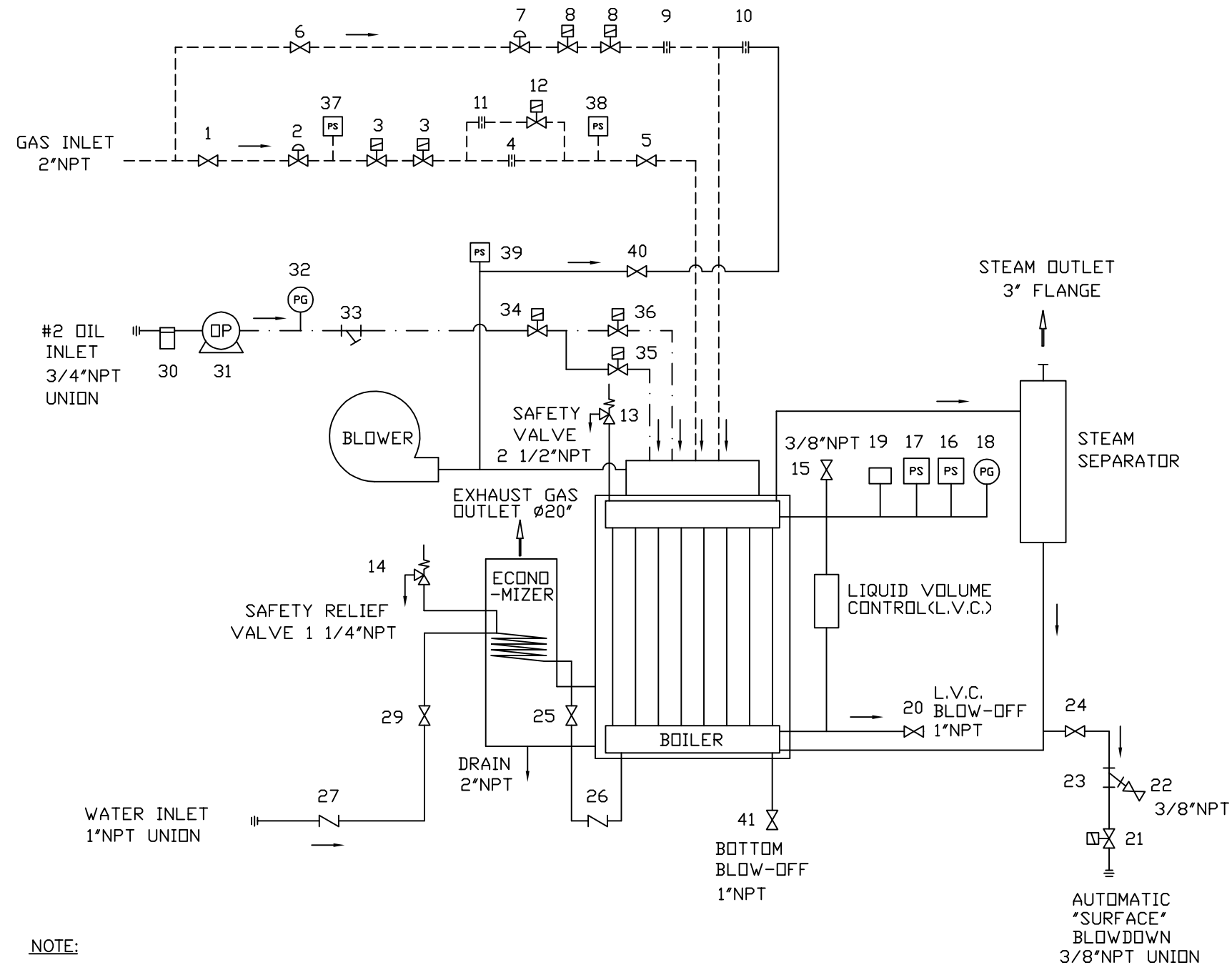


APP. TYPE	QTY
EX-150SGO-07	-
EX-200SGO-07	-



NOTE:

1. UNLESS OTHERWISE SPECIFIED, ALL ITEMS ARE STANDARD.
2. THIS DRAWING IS ILLUSTRATED WITH AN ECONOMIZER.
3. DESIGN, SPECIFICATIONS AND SOME PIPINGS ARE SUBJECT TO CHANGE WITHOUT NOTICE.
4. FLANGES USED ARE ANSI B16.5 CLASS 150#.
5. SAFETY VALVE SIZE WILL CHANGE FOR BOILER SET BELOW 150PSIG.
6. ITEMS 14, 25 AND 26 ARE APPLIED FOR ECONOMIZER SECTION VIII ONLY.

41	BLOW-OFF VALVE			1" #2500 NEO
40	AIR CONTROL VALVE			1/2" #3380 NEO
39	AIR PRESSURE SWITCH			RLGP-G 5-30" ANTUNES
38	GAS PRESSURE SWITCH			RLGP-G 5-30" ANTUNES (HIGH)
37	GAS PRESSURE SWITCH			RLGP-G 5-30" ANTUNES (LOW)
36	OIL CONTROL VALVE			3/8" 8210C6 ASCO (HIGH FIRE)
35	OIL CONTROL VALVE			3/8" 8210C6 ASCO (LOW FIRE)
34	OIL CONTROL VALVE			3/8" 8210C6 ASCO (SHUT OFF)
33	OIL STRAINER			3/8" 100MESH
32	OIL PRESSURE GAUGE			ø2 1/2" 0-400PSIG WIKA
31	OIL PUMP			RSA-125 DANFOSS
30	OIL FILTER			3/4" 2A17A C.G.F.
29	VALVE			1" #3380 NEO (WITH ECO.)
28				
27	CHECK VALVE			1" DDCV2 MIURA (WITH ECO.)
26	CHECK VALVE			1" FIG.62T JENKINS
25	WATER VALVE			1" #3380 NEO
24	BLOWDOWN VALVE			3/4" #2500 NEO
23	BLOWDOWN STRAINER			3/4" 20MESH
22	SAMPLE WATER VALVE			3/8" #18(AK300D) KITZ
21	BLOWDOWN CONTROL VALVE			255A-5/32-E-BR-3/8 BURKERT
20	L.V.C. BLOW-OFF VALVE			1" #2500 NEO
19	PRESSURE SENSOR			YSK-AC20M-334
18	PRESSURE GAUGE			ø4" 0-300PSIG WINTER'S
17	STEAM PRESSURE SWITCH			L404C (HIGH LIMITED)
16	STEAM PRESSURE SWITCH			L404A (BACK-UP CONTROL)
15	AIR VENT VALVE			3/8" #18(AK300D) KITZ
14	SAFETY RELIEF VALVE			3/4"xEx1 1/4" #918BED (WITH ECO.)
13	SAFETY VALVE			2"xJx2 1/2" #6021JH KUNKLE
12	HIGH-LOW CONTROL VALVE			1 1/2" 8215B70 ASCO
11	MAIN GAS ORIFICE (HIGH)			ø1 1/2"(NATURAL)/ø7/8"(PROPANE)
10	PILOT AIR ORIFICE			ø5/32"
9	PILOT GAS ORIFICE			ø1/16"
8	PILOT GAS CONTROL VALVE			1/2" 8215G20 ASCO
7	PILOT GAS REGULATOR			1/2" #325-3 MAXITROL
6	PILOT GAS VALVE			1/2" #3380 NEO
5	TEST FIRING VALVE			2" #3380 NEO
4	MAIN GAS ORIFICE (LOW)			ø3/4"(NATURAL)/ø7/16"(PROPANE)
3	GAS CONTROL VALVE			2" V5055+V4055 HONEYWELL
2	MAIN GAS REGULATOR			2" 133L FISHER
1	MAIN GAS VALVE			2" #3380 NEO

NO	NAME OF PART	MATERIAL	QTY	REMARKS / DRAWING #
DWN.:	ALAN	CK'D.:		SCALE: - DO NOT SCALE

<p style="text-align: center;">" CONFIDENTIAL "</p> <p>THIS MATERIAL IS THE PROPERTY OF MIURA BOILER CO., LTD., AND MUST NOT BE REPRODUCED, PUBLISHED OR DISCLOSED TO OTHERS WITHOUT AUTHORIZATION.</p>	SYM	REVISION	DATE	BY	DATE: MAY.22,07	APPROVED:	THIRD ANGLE SYSTEM	DIM'N SHOWN ARE INCH
	CAD DWG - NO MANUAL CHANGES PERMITTED						DESCRIPTION: BOILER SYSTEM DIAGRAM	DRAWING NUMBER A000-EX20-OS17