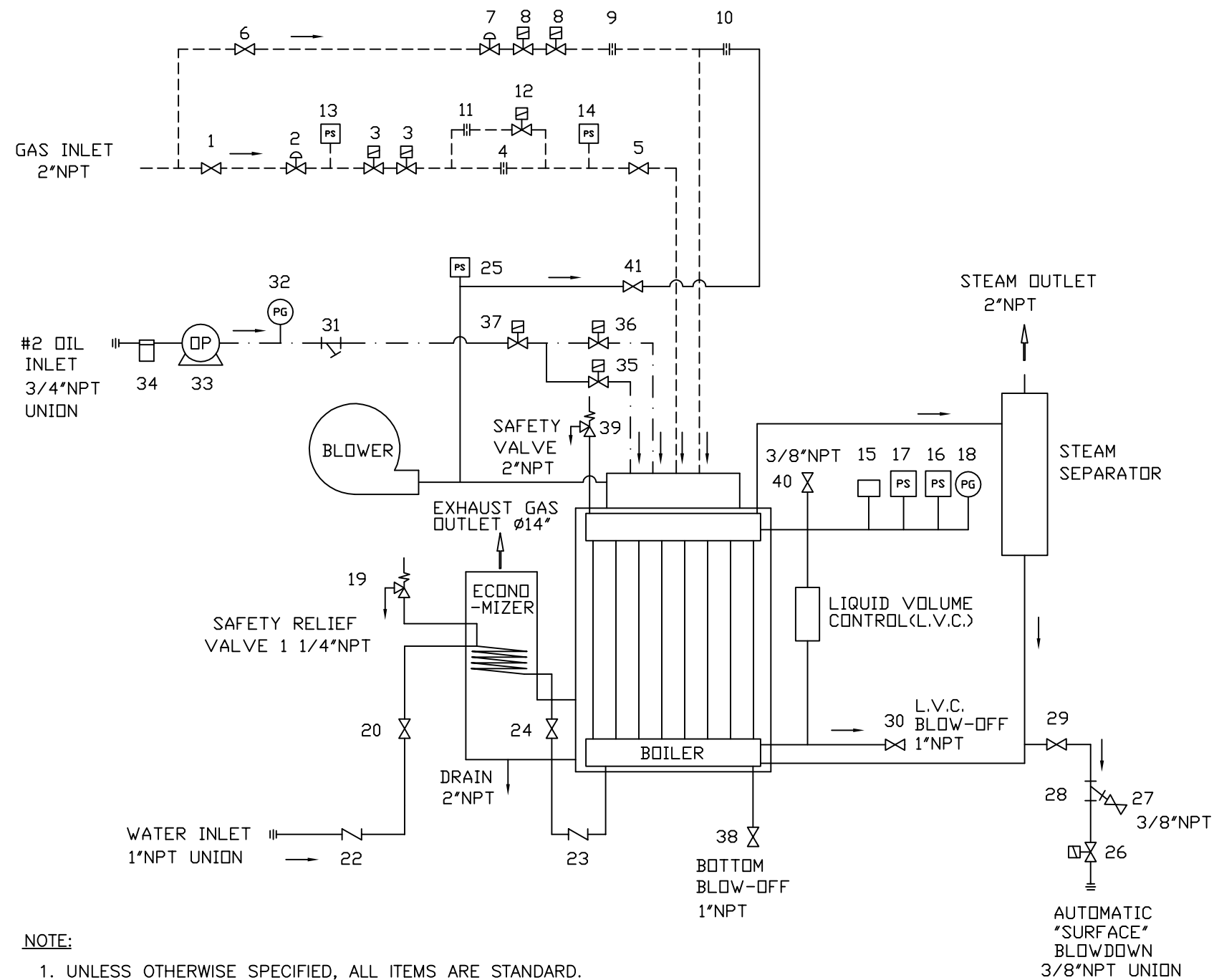


APP. TYPE	QTY
EX-100SGO-07	-



NOTE:

1. UNLESS OTHERWISE SPECIFIED, ALL ITEMS ARE STANDARD.
2. THIS DRAWING IS ILLUSTRATED WITH AN ECONOMIZER.
3. DESIGN, SPECIFICATIONS AND SOME PIPINGS ARE SUBJECT TO CHANGE WITHOUT NOTICE.
4. FLANGES USED ARE ANSI B16.5 CLASS 150#.
5. SAFETY VALVE SIZE WILL CHANGE FOR BOILER SET BELOW 150PSIG.
6. ITEMS 19, 23 AND 24 ARE APPLIED FOR ECONOMIZER SECTION VIII ONLY.

41	AIR CONTROL VALVE			1/2" #3380 NEO
40	AIR VENT VALVE			3/8" #18(AK300D) KITZ
39	SAFETY VALVE			1 1/2"xHx2" #6021HG KUNKLE
38	BLOW-OFF VALVE			1" #2500 NEO
37	OIL CONTROL VALVE			3/8" 8210C6 ASCO (SHUT OFF)
36	OIL CONTROL VALVE			3/8" 8210C6 ASCO (HIGH FIRE)
35	OIL CONTROL VALVE			3/8" 8210C6 ASCO (LOW FIRE)
34	OIL FILTER			3/4" 2A17A C.G.F.
33	OIL PUMP			RSA-125 DANFOSS
32	OIL PRESSURE GAUGE			ø2 1/2" 0-400PSIG WIKA
31	OIL STRAINER			3/8" 100MESH
30	L.V.C. BLOWDOWN VALVE			1" #2500 NEO
29	BLOWDOWN VALVE			3/4" #2500 NEO
28	BLOWDOWN STRAINER			3/4" 20MESH
27	SAMPLE WATER VALVE			3/8" #18(AK300D) KITZ
26	BLOWDOWN CONTROL VALVE			255A-5/32-E-BR-3/8 BURKERT
25	AIR PRESSURE SWITCH			RLGP-G 5-30" ANTUNES
24	WATER VALVE			1" #3380 NEO
23	CHECK VALVE			1" FIG.62T JENKINS
22	CHECK VALVE			1" DDCV2 MIURA (WITH ECO.)
21				
20	VALVE			1" #3380 NEO (WITH ECO.)
19	SAFETY RELIEF VALVE			3/4"xEx1 1/4" #918BED (WITH ECO.)
18	PRESSURE GAUGE			ø4" 0-300PSIG WINTER'S
17	STEAM PRESSURE SWITCH			L404C (HIGH LIMITED)
16	STEAM PRESSURE SWITCH			L404A (BACK-UP CONTROL)
15	PRESSURE SENSOR			YSK-AC20M-334
14	GAS PRESSURE SWITCH			RLGP-G 5-30" ANTUNES (HIGH)
13	GAS PRESSURE SWITCH			RLGP-G 5-30" ANTUNES (LOW)
12	HIGH-LOW CONTROL VALVE			1 1/2" 8215B70 ASCO
11	MAIN GAS ORIFICE (HIGH)			ø9/16"(NATURAL)/ø3/4"(PROPANE)
10	PILOT AIR ORIFICE			ø5/32"
9	PILOT GAS ORIFICE			ø1/16"
8	PILOT GAS CONTROL VALVE			1/2" 8215G20 ASCO
7	PILOT GAS REGULATOR			1/2" #325-3 MAXITROL
6	PILOT GAS VALVE			1/2" #3380 NEO
5	TEST FIRING VALVE			1 1/2" #3380 NEO
4	MAIN GAS ORIFICE (LOW)			ø1/2"(NATURAL)/ø7/16"(PROPANE)
3	GAS CONTROL VALVE			2" V5055+V4055 HONEYWELL
2	MAIN GAS REGULATOR			2" 133L FISHER
1	MAIN GAS VALVE			2" #3380 NEO

NO	NAME OF PART	MATERIAL	QTY	REMARKS / DRAWING #
DWN.:	ALAN	CK'D.:		SCALE: - DO NOT SCALE

<p style="text-align: center;">" CONFIDENTIAL "</p> <p>THIS MATERIAL IS THE PROPERTY OF MIURA BOILER CO., LTD., AND MUST NOT BE REPRODUCED, PUBLISHED OR DISCLOSED TO OTHERS WITHOUT AUTHORIZATION.</p>	SYM	REVISION	DATE	BY	DATE: MAY.22,07	APPROVED:	THIRD ANGLE SYSTEM	DIM'N SHOWN ARE INCH
	CAD DWG - NO MANUAL CHANGES PERMITTED						DESCRIPTION: BOILER SYSTEM DIAGRAM	DRAWING NUMBER A000-EX10-0S14