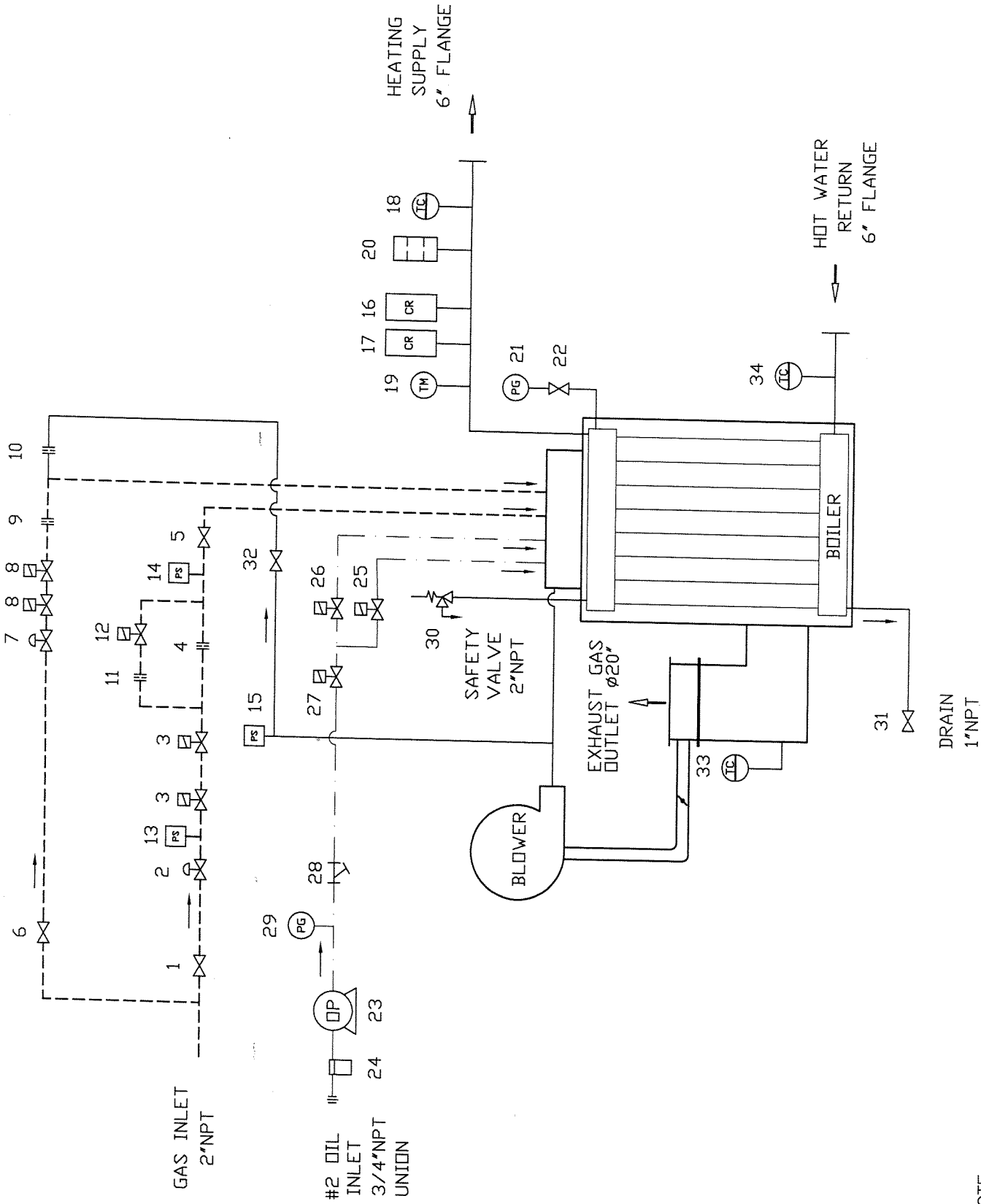


APP. TYPE	QTY
EXW-200	-



- NOTE:**
1. THIS DRAWING IS ILLUSTRATED WITH A F.G.R.
  2. UNLESS OTHERWISE SPECIFIED, ALL ITEMS ARE STANDARD.
  3. DESIGN & SPECIFICATIONS ARE SUBJECT TO CHANGE WITHOUT NOTICE.
  4. FLANGES USED ARE ANSI B16.5 CLASS 150#.
  5. SAFETY VALVE SIZE WILL CHANGE FOR BOILER SET BELOW 160PSIG.

NO	NAME OF PART	MATERIAL	QTY	REMARKS / DRAWING #
34	THERMOCOUPLE (RETURN)	K	UNGROUND	
33	THERMOCOUPLE (FLUE GAS)	K	UNGROUND	
32	AIR CONTROL VALVE	1/2" #3380	NEO	
31	DRAIN VALVE	1"	#2500 NEO	
30	SAFETY VALVE	1 1/2" x Gx2"	#537 KUNKLE	
29	OIL PRESSURE GAUGE	ø2 1/2"	0-400PSIG WIKA	
28	OIL STRAINER	3/8"	100MESH	
27	OIL CONTROL VALVE	3/8"	8210C6 ASCO (SHUT OFF)	
26	OIL CONTROL VALVE	3/8"	8210C6 ASCO (HIGH FIRE)	
25	OIL CONTROL VALVE	3/8"	8210C6 ASCO (LOW FIRE)	
24	OIL FILTER	3/4"	2A17A C.G.F.	
23	OIL PUMP	RSA-125	DANFOSS	
22	CONTROL VALVE	1"	#3380 NEO	
21	PRESSURE GAUGE	ø4"	0-300PSIG WINTER'S	
20	FLOW SWITCH	1 1/2"	V4-2-U W.E.ANDERSON	
19	THERMOMETER	30-300°F	TRERICE	
18	THERMOCOUPLE (SUPPLY)	K	UNGROUND	
17	BACK UP CONTROLLER	L4008A	HONEYWELL	
16	HIGH LIMITED CUT-OFF	L4008E	HONEYWELL	
15	AIR PRESSURE SWITCH	RLGP-G 5-30"	ANTUNES	
14	GAS PRESSURE SWITCH	RLGP-G 5-30"	ANTUNES (HIGH)	
13	GAS PRESSURE SWITCH	RLGP-G 5-30"	ANTUNES (LOW)	
12	HIGH-LOW CONTROL VALVE	1 1/2"	8215B80 ASCO	
11	MAIN GAS ORIFICE (HIGH)	ø1 1/2"	(NATURAL)/ø7/8"(PROPANE)	
10	PILOT AIR ORIFICE	ø5/32"		
9	PILOT GAS ORIFICE	ø1/16"		
8	PILOT GAS CONTROL VALVE	1/2"	8215G20 ASCO	
7	PILOT GAS REGULATOR	1/2"	#325-3 MAXITROL	
6	PILOT GAS VALVE	1/2"	#3380 NEO	
5	TEST FIRING VALVE	2"	#3380 NEO	
4	MAIN GAS ORIFICE (LOW)	ø3/4"	(NATURAL)/ø7/16"(PROPANE)	
3	GAS CONTROL VALVE	2"	V5055+V4055 HONEYWELL	
2	MAIN GAS REGULATOR	2"	133L FISHER	
1	MAIN GAS VALVE	2"	#3380 NEO	

DWN: TRAM	CK'D: _____	SCALE: -	DO NOT SCALE
DATE: NOV.29,04	APPROVED: <i>Kozla</i>	THIRD ANGLE SYSTEM	DIM'N SHOWN ARE INCH
SYMBOL	REVISION	DESCRIPTION: BOILER SYSTEM DIAGRAM	
CAD DWG - NO MANUAL CHANGES PERMITTED		DRAWING NUMBER: A000-EW20-0S02	
<p>" CONFIDENTIAL "</p> <p>THIS MATERIAL IS THE PROPERTY OF MIURA BOILER CO., LTD., AND MUST NOT BE REPRODUCED, PUBLISHED OR DISCLOSED TO OTHERS WITHOUT AUTHORIZATION.</p>			